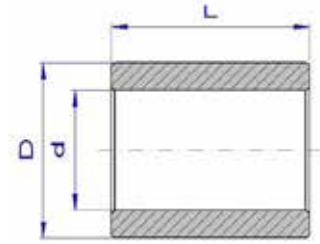


SINTERBRONZEGLEITLAGER

ZYLINDERLAGER STANDARDABMESSUNGEN



Sinter

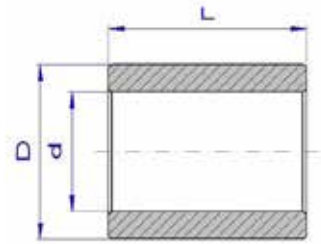
| d | D | L | | | | | | | |
|----|----|-------------------------------|--|--|--|--|--|--|--|
| 1 | 3 | 2 | | | | | | | |
| 2 | 4 | 4 | | | | | | | |
| 2 | 5 | 2 3 | | | | | | | |
| 3 | 6 | 4 5 6 10 | | | | | | | |
| 3 | 8 | 4 | | | | | | | |
| 4 | 6 | 5 6 8 10 | | | | | | | |
| 4 | 7 | 4 8 12 | | | | | | | |
| 4 | 8 | 4 5 6 8 10 12 | | | | | | | |
| 4 | 10 | 8 | | | | | | | |
| 5 | 8 | 5 8 10 12 15 16 | | | | | | | |
| 5 | 9 | 4 5 8 | | | | | | | |
| 5 | 10 | 5 6 8 10 12 15 | | | | | | | |
| 5 | 12 | 10 | | | | | | | |
| 6 | 9 | 4 6 10 12 16 | | | | | | | |
| 6 | 10 | 4 5 6 10 12 15 16 | | | | | | | |
| 6 | 12 | 5 6 8 10 12 15 16 | | | | | | | |
| 6 | 14 | 12 | | | | | | | |
| 7 | 10 | 5 8 10 | | | | | | | |
| 8 | 10 | 6 10 15 | | | | | | | |
| 8 | 11 | 6 8 12 16 20 | | | | | | | |
| 8 | 12 | 6 8 10 12 15 16 20 | | | | | | | |
| 8 | 14 | 8 10 12 15 16 20 | | | | | | | |
| 8 | 18 | 16 | | | | | | | |
| 9 | 12 | 6 10 14 | | | | | | | |
| 9 | 14 | 10 12 15 20 | | | | | | | |
| 10 | 13 | 10 12 15 16 20 25 | | | | | | | |
| 10 | 14 | 8 10 12 16 20 25 | | | | | | | |
| 10 | 15 | 10 12 15 16 20 25 | | | | | | | |
| 10 | 16 | 8 10 12 15 16 20 25 | | | | | | | |
| 10 | 18 | 10 12 15 20 25 | | | | | | | |
| 10 | 22 | 20 | | | | | | | |
| 12 | 14 | 10 12 15 20 | | | | | | | |
| 12 | 15 | 10 12 15 16 20 25 | | | | | | | |
| 12 | 16 | 8 10 12 15 16 20 25 | | | | | | | |
| 12 | 17 | 12 15 16 20 25 | | | | | | | |
| 12 | 18 | 8 10 12 15 16 20 25 30 | | | | | | | |
| 12 | 20 | 12 15 20 25 30 | | | | | | | |
| 12 | 25 | 25 | | | | | | | |
| 14 | 18 | 10 14 15 18 20 22 25 28 | | | | | | | |
| 14 | 20 | 10 12 14 15 18 20 22 25 28 30 | | | | | | | |
| 14 | 22 | 15 20 25 30 | | | | | | | |
| 14 | 28 | 30 | | | | | | | |
| 15 | 18 | 15 20 25 30 | | | | | | | |
| 15 | 19 | 10 15 16 20 25 32 | | | | | | | |
| 15 | 20 | 10 12 15 20 25 30 | | | | | | | |
| 15 | 21 | 10 15 16 20 25 32 | | | | | | | |
| 15 | 22 | 15 16 20 25 30 | | | | | | | |
| 15 | 30 | 30 | | | | | | | |
| 16 | 20 | 12 15 16 20 25 30 32 | | | | | | | |

| d | D | L | | | | | | | | | |
|----|----|-------------------------------|--|--|--|--|--|--|--|--|--|
| 16 | 22 | 12 15 16 20 25 30 32 35 | | | | | | | | | |
| 16 | 32 | 30 | | | | | | | | | |
| 17 | 22 | 15 20 25 30 35 | | | | | | | | | |
| 18 | 22 | 12 15 18 20 22 25 28 30 36 | | | | | | | | | |
| 18 | 24 | 12 18 22 28 30 36 | | | | | | | | | |
| 18 | 25 | 16 18 20 22 25 28 30 35 36 | | | | | | | | | |
| 18 | 35 | 30 | | | | | | | | | |
| 20 | 24 | 16 20 25 32 | | | | | | | | | |
| 20 | 25 | 15 16 20 25 30 32 35 | | | | | | | | | |
| 20 | 26 | 15 16 20 25 30 32 35 40 | | | | | | | | | |
| 20 | 27 | 16 20 25 32 | | | | | | | | | |
| 20 | 28 | 16 20 25 30 32 35 40 | | | | | | | | | |
| 20 | 30 | 20 25 30 35 40 | | | | | | | | | |
| 20 | 40 | 40 | | | | | | | | | |
| 22 | 27 | 15 18 20 22 25 28 30 35 36 40 | | | | | | | | | |
| 22 | 28 | 18 20 22 25 28 30 35 36 40 | | | | | | | | | |
| 22 | 29 | 18 22 28 36 | | | | | | | | | |
| 22 | 32 | 20 30 | | | | | | | | | |
| 25 | 30 | 20 25 30 32 35 40 | | | | | | | | | |
| 25 | 32 | 20 25 30 32 35 40 45 | | | | | | | | | |
| 25 | 35 | 20 25 30 35 40 45 50 | | | | | | | | | |
| 25 | 45 | 35 | | | | | | | | | |
| 28 | 32 | 20 22 25 28 32 36 40 | | | | | | | | | |
| 28 | 33 | 20 22 25 28 32 36 40 45 | | | | | | | | | |
| 28 | 35 | 25 30 35 40 45 50 | | | | | | | | | |
| 28 | 36 | 22 28 36 45 | | | | | | | | | |
| 30 | 35 | 20 25 30 35 40 45 50 | | | | | | | | | |
| 30 | 38 | 20 24 25 30 35 38 40 45 50 | | | | | | | | | |
| 30 | 40 | 15 20 25 30 35 40 45 50 60 | | | | | | | | | |
| 30 | 50 | 60 | | | | | | | | | |
| 32 | 38 | 20 25 32 40 50 | | | | | | | | | |
| 32 | 40 | 20 25 30 32 35 40 45 50 | | | | | | | | | |
| 35 | 40 | 20 25 30 35 40 45 50 | | | | | | | | | |
| 35 | 41 | 25 35 40 | | | | | | | | | |
| 35 | 44 | 22 28 35 | | | | | | | | | |
| 35 | 45 | 25 30 35 40 45 50 60 70 | | | | | | | | | |
| 36 | 42 | 22 28 36 45 | | | | | | | | | |
| 36 | 45 | 22 28 36 45 | | | | | | | | | |
| 38 | 44 | 25 35 45 | | | | | | | | | |
| 40 | 45 | 35 40 45 50 | | | | | | | | | |
| 40 | 46 | 25 30 32 40 50 | | | | | | | | | |
| 40 | 50 | 25 30 32 40 45 50 60 80 | | | | | | | | | |
| 45 | 51 | 28 35 36 45 55 56 | | | | | | | | | |
| 45 | 55 | 30 35 40 45 50 55 60 65 | | | | | | | | | |
| 45 | 56 | 28 36 45 56 | | | | | | | | | |
| 45 | 60 | 40 45 50 60 | | | | | | | | | |
| 45 | 65 | 80 | | | | | | | | | |
| 50 | 56 | 32 40 50 63 | | | | | | | | | |
| 50 | 60 | 32 35 40 45 50 60 70 100 | | | | | | | | | |

SINTERBRONZEGLEITLAGER

ZYLINDERLAGER

STANDARDABMESSUNGEN

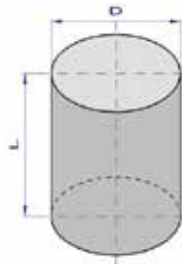


| d | D | L | | |
|----|----|----|-----|--------|
| 50 | 70 | 70 | | |
| 55 | 65 | 40 | 55 | 70 |
| 55 | 70 | 70 | | |
| 60 | 68 | 50 | 60 | 70 |
| 60 | 70 | 50 | 60 | 90 120 |
| 60 | 72 | 50 | 60 | 70 |
| 60 | 75 | 60 | 90 | |
| 60 | 80 | 90 | 120 | |
| 60 | 85 | 90 | | |
| 63 | 70 | 40 | 50 | |
| 65 | 75 | 60 | 90 | |
| 65 | 80 | 60 | 90 | |

| d | D | L | | |
|-----|-----|-----|-----|-----|
| 70 | 80 | 60 | 90 | 120 |
| 70 | 85 | 60 | 90 | |
| 75 | 85 | 70 | 100 | |
| 75 | 90 | 70 | 100 | |
| 75 | 100 | 100 | | |
| 80 | 90 | 70 | 100 | |
| 80 | 95 | 70 | 100 | |
| 80 | 100 | 80 | 120 | |
| 80 | 105 | 100 | | |
| 85 | 95 | 100 | | |
| 85 | 100 | 100 | | |
| 90 | 105 | 80 | | |
| 90 | 110 | 80 | | |
| 100 | 120 | 80 | 120 | |

Beispiel für Artikelbezeichnung: SB 20/28x25
 d / D x L
 Gleitlagertype

SINTERBRONZEGLEITLAGER



VOLLSTÜCKE SB-V

STANDARDABMESSUNGEN

| d | L | | |
|-----|-----|-----|----|
| 10 | 22 | | |
| 15 | 30 | | |
| 20 | 25 | 50 | 52 |
| 25 | 25 | 50 | |
| 30 | 52 | | |
| 32 | 40 | 80 | |
| 40 | 52 | | |
| 42 | 50 | 100 | |
| 45 | 90 | | |
| 50 | 60 | | |
| 52 | 60 | 120 | |
| 60 | 60 | | |
| 62 | 120 | | |
| 70 | 120 | | |
| 80 | 80 | 120 | |
| 105 | 120 | | |
| 125 | 80 | 140 | |
| 149 | 80 | 140 | |
| 178 | 140 | | |
| 202 | 80 | | |

SINTERBRONZEGLEITLAGER

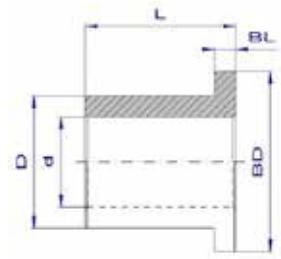
ROHRROHLINGE SB-R

STANDARDABMESSUNGEN

| d | D | L | |
|-----|-----|-----|-----|
| 38 | 66 | 65 | 120 |
| 45 | 105 | 120 | |
| 53 | 85 | 65 | 120 |
| 59 | 125 | 80 | 140 |
| 68 | 104 | 65 | 120 |
| 79 | 149 | 80 | 140 |
| 83 | 123 | 65 | 120 |
| 98 | 142 | 65 | 120 |
| 110 | 178 | 80 | 140 |
| 150 | 202 | 140 | |

Beispiel für Artikelbezeichnung: SB V 50x60
 d / D x L
 Vollstück
 Gleitlagertype

SINTERBRONZEGLEITLAGER



BUNDLAGER STANDARDABMESSUNGEN

| d | D | BD | BL | L | |
|----|----|----|-----|-------------------------------|---------------|
| 3 | 5 | 8 | 1,5 | 4 | |
| 3 | 6 | 9 | 1,5 | 4 | 5 6 10 |
| 4 | 8 | 12 | 2 | 4 5 | |
| 4 | 8 | 10 | 1,5 | 6 | |
| 4 | 8 | 12 | 2 | 6 | 8 10 12 |
| 5 | 9 | 13 | 2 | 4 5 8 | |
| 5 | 10 | 12 | 2 | 6 | |
| 6 | 10 | 14 | 2 | 4 | 6 10 15 16 |
| 6 | 12 | 14 | 2 | 6 | |
| 8 | 12 | 16 | 2 | 6 | 8 10 12 15 16 |
| 8 | 14 | 18 | 3 | 8 | |
| 9 | 14 | 19 | 2,5 | 6 10 14 | |
| 10 | 13 | 16 | 1,5 | 10 16 20 | |
| 10 | 14 | 18 | 2 | 10 15 20 | |
| 10 | 15 | 20 | 3 | 10 15 16 20 | |
| 10 | 16 | 20 | 3 | 8 10 | |
| 10 | 16 | 22 | 3 | 8 10 16 | |
| 12 | 15 | 18 | 1,5 | 12 16 20 | |
| 12 | 17 | 22 | 3 | 10 12 15 16 20 25 | |
| 12 | 18 | 22 | 3 | 10 12 | |
| 12 | 18 | 24 | 3 | 8 12 20 | |
| 14 | 18 | 22 | 2 | 14 18 22 | |
| 14 | 20 | 25 | 3 | 10 12 14 15 18 20 22 25 28 30 | |
| 14 | 20 | 26 | 3 | 10 14 20 | |
| 15 | 19 | 23 | 2 | 16 20 25 | |
| 15 | 20 | 25 | 3 | 15 20 25 30 | |
| 15 | 20 | 27 | 3 | 15 25 | |
| 15 | 21 | 27 | 3 | 10 15 16 20 25 32 | |
| 15 | 22 | 28 | 3 | 12 16 | |
| 16 | 20 | 24 | 2 | 16 20 25 | |
| 16 | 22 | 28 | 3 | 12 15 16 20 25 30 32 | |
| 16 | 22 | 28 | 4 | 12 16 | |
| 18 | 22 | 26 | 2 | 18 22 28 | |
| 18 | 24 | 30 | 3 | 12 18 22 28 30 | |
| 18 | 25 | 32 | 4 | 12 16 20 25 30 35 | |
| 20 | 24 | 28 | 2 | 10 16 20 25 | |
| 20 | 26 | 32 | 3 | 15 16 20 25 30 32 | |
| 20 | 28 | 35 | 4 | 16 20 25 30 35 | |
| 22 | 27 | 32 | 2,5 | 18 22 28 | |
| 22 | 28 | 33 | 4 | 15 20 25 30 35 40 | |
| 22 | 29 | 36 | 3,5 | 18 22 28 36 | |
| 25 | 30 | 35 | 2,5 | 20 25 32 | |
| 25 | 32 | 39 | 3,5 | 20 25 30 | |
| 25 | 32 | 40 | 4 | 20 25 30 32 35 40 | |
| 25 | 35 | 45 | 5 | 16 25 30 | |
| 28 | 33 | 38 | 2,5 | 22 28 36 | |

| d | D | BD | BL | L | |
|-----|-----|-----|-----|----------------------|--|
| 28 | 36 | 44 | 4 | 22 25 28 30 35 36 40 | |
| 30 | 38 | 46 | 4 | 20 25 30 | |
| 30 | 40 | 48 | 4 | 25 30 35 40 | |
| 30 | 40 | 50 | 5 | 20 30 | |
| 32 | 38 | 44 | 3 | 20 25 32 | |
| 32 | 40 | 48 | 4 | 20 25 30 32 35 40 | |
| 35 | 45 | 55 | 5 | 20 25 30 35 40 | |
| 36 | 42 | 48 | 3 | 22 28 36 | |
| 36 | 45 | 54 | 4,5 | 22 28 36 | |
| 40 | 46 | 52 | 3 | 25 32 40 | |
| 40 | 50 | 60 | 5 | 25 30 32 35 40 50 | |
| 40 | 50 | 60 | 6 | 25 40 | |
| 45 | 51 | 57 | 3 | 28 36 45 | |
| 45 | 55 | 65 | 5 | 35 45 55 | |
| 45 | 55 | 65 | 6 | 30 35 45 55 | |
| 45 | 56 | 67 | 5,5 | 28 36 45 | |
| 50 | 56 | 62 | 3 | 32 40 50 | |
| 50 | 60 | 70 | 5 | 32 35 40 50 | |
| 50 | 60 | 70 | 6 | 30 32 35 40 50 50 | |
| 60 | 70 | 80 | 5 | 50 60 | |
| 60 | 72 | 84 | 6 | 50 60 | |
| 60 | 75 | 85 | 8 | 35 60 | |
| 70 | 85 | 95 | 8 | 60 | |
| 80 | 95 | 105 | 8 | 70 | |
| 90 | 110 | 120 | 8 | 50 | |
| 100 | 120 | 130 | 8 | 80 | |

Beispiel für Artikelbezeichnung: SB F 45/55x50-70x5
 ——— d / D x L - BD x BL
 ——— Bundbuchse
 ——— Gleitlagertyp