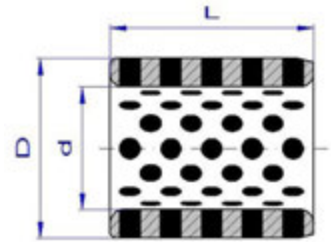


## GLEITLAGER AUS STAHL UND BRONZE



### ZYLINDERLAGER STANDARDABMESSUNGEN

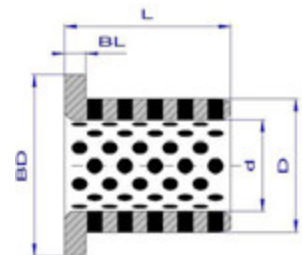
d	D	L							
8	12	10	12	15					
10	14	8	10	12	15	20			
12	18	10	12	15	16	20	25	30	
13	19	10	15	16	20				
14	20	10	12	15	20	25	30		
15	21	10	12	15	16	20	25	30	
16	22	10	12	15	16	20	25	30	35 40
18	24	15	16	20	25	30	35	40	
20	28	15	16	20	25	30	35	40	50
20	30	16	20	25	30	35	40		
25	33	16	20	25	30	35	40	50	60
25	35	16	20	25	30	35	40	50	50
30	38	20	25	30	35	40	50	60	
30	40	20	25	30	35	40	50	60	
32	42	30	40	60					
35	44	25	30	35	40	50	60		
35	45	20	25	30	35	40	50	60	
40	50	20	25	30	35	40	50	60	70 80
40	55	25	30	35	40	50	60		
45	55	30	35	40	50	60			
45	56	30	35	40	50	60			
45	60	30	35	40	50	60	70	80	

d	D	L									
50	60	30	35	40	50	60	70	80			
50	62	30	35	40	50	60	70				
50	65	30	40	50	60	70	80	100			
55	70	40	50	60	70						
60	74	30	35	40	50	60	70	80			
60	75	30	35	40	50	60	70	80	100		
63	75	60	70	80	120						
65	80	50	60	70	80						
70	85	35	40	50	60	70	80	100			
70	90	50	60	70	80						
75	90	60	70	80	100						
75	95	60	70	80	100						
80	96	40	50	60	70	80	100	120			
80	100	40	50	60	70	80	100	120	140		
90	110	60	70	80	100	120					
100	120	60	70	80	100	120	140				
110	130	80	100	120							
120	140	80	100	120	140						
125	145	100	120								
130	150	100	120	130							
140	160	100	140								
150	170	100	150								
160	180	100	150								

Bronze

Beispiel für Artikelbezeichnung: AW-650 20/28x25  
 d / D x L  
 Gleitlagertype

## GLEITLAGER AUS STAHL UND BRONZE



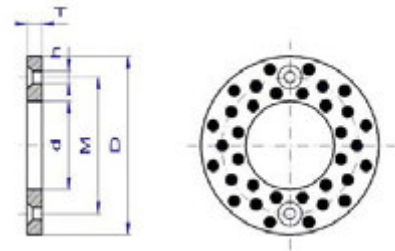
### BUNDLAGER STANDARDABMESSUNGEN

d	D	BD	BL	L					
10	14	22	2	15	20				
12	18	25	3	15	20				
13	19	26	3	15	20				
14	20	27	3	15	20				
15	21	28	3	15	20	25	30		
16	22	29	3	15	20	25	30		
20	30	40	5	15	20	25	30	40	
25	35	45	5	15	20	25	30	40	
30	40	50	5	20	25	30	35	40	50
35	45	60	5	20	30	40	50		

d	D	BD	BL	L					
40	50	65	5	20	30	40	50		
45	55	70	5	30	40	50	60		
50	60	75	5	30	40	50	60		
55	65	80	5	40	60				
60	75	90	7,5	40	50	80			
70	85	105	7,5	50	80				
75	90	110	7,5	60					
80	100	120	10	60	80	100			
90	110	130	10	60	80				
100	120	150	10	80	100				
120	140	170	10	80	100				

Beispiel für Artikelbezeichnung: AW-650 F 45/55x50-70x5  
 d / D x L - BD x BL  
 Bundbuchse  
 Gleitlagertype

## GLEITLAGER AUS STAHL UND BRONZE

ANLAUFSCHEIBEN  
STANDARDABMESSUNGEN

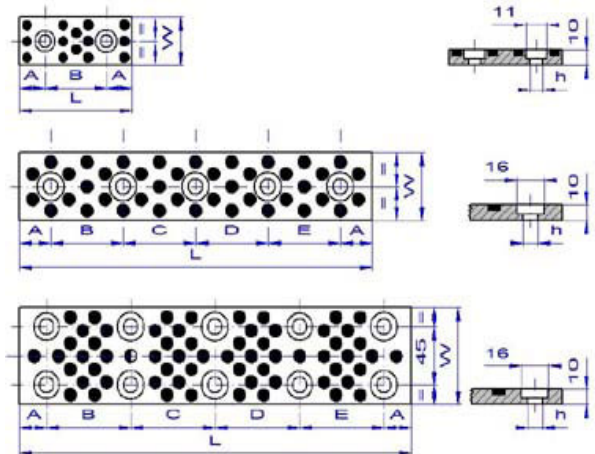
Type	d	D	T	M	h
AW-650 D 10	10,2	30	3	-	-
AW-650 D 12	12,2	40	3	28	2 x 3,5
AW-650 D 13	13,2	40	3	28	2 x 3,5
AW-650 D 14	14,2	40	3	28	2 x 3,5
AW-650 D 15	15,2	50	3	35	2 x 3,5
AW-650 D 16	16,2	50	3	35	2 x 3,5
AW-650 D 18	18,2	50	3	35	2 x 3,5
AW-650 D 20	20,2	50	5	35	2 x 6,0
AW-650 D 25	25,2	55	5	40	2 x 6,0
AW-650 D 30	30,2	60	5	45	2 x 6,0
AW-650 D 35	35,2	70	5	50	2 x 6,0
AW-650 D 40	40,2	80	7	60	2 x 7,0
AW-650 D 45	45,3	90	7	67,5	2 x 7,0
AW-650 D 50	50,3	100	8	75	2 x 7,0
AW-650 D 55	55,3	110	8	85	2 x 7,0
AW-650 D 60	60,3	120	8	90	4 x 9,0
AW-650 D 65	65,3	125	8	95	4 x 9,0
AW-650 D 70	70,3	130	10	100	4 x 9,0
AW-650 D 75	75,3	140	10	110	4 x 9,0
AW-650 D 80	80,3	150	10	120	4 x 9,0
AW-650 D 90	90,5	170	10	140	4 x 11,0
AW-650 D 100	100,5	190	10	160	4 x 11,0
AW-650 D 120	120,5	200	10	175	4 x 11,0

Beispiel für Artikelbezeichnung: AW-650 D 35

└─ Innendurchmesser  
└─ Anlaufscheibe  
└─ Gleitlagertype

## GLEITLAGER AUS STAHL UND BRONZE

### GLEITPLATTEN STANDARDABMESSUNGEN



Type	W	L	T	h	A	B	C	D	E
AW-650 SP	18x75x10	18	75	10	2 x 7,0	15	45		
AW-650 SP	18x100x10	18	100	10	2 x 7,0	25	60		
AW-650 SP	18x125x10	18	125	10	2 x 7,0	25	75		
AW-650 SP	18x150x10	18	150	10	2 x 7,0	25	100		
AW-650 SP	28x75x10	28	75	10	2 x 7,0	15	45		
AW-650 SP	28x100x10	28	100	10	2 x 7,0	25	50		
AW-650 SP	28x125x10	28	125	10	2 x 7,0	25	75		
AW-650 SP	28x150x10	28	150	10	2 x 7,0	25	100		
AW-650 SP	35x100x10	35	100	10	2 x 9,0	20	60		
AW-650 SP	35x150x10	35	150	10	3 x 9,0	20	55	55	
AW-650 SP	35x200x10	35	200	10	4 x 9,0	20	55	50	55
AW-650 SP	35x250x10	35	250	10	4 x 9,0	20	70	70	70
AW-650 SP	35x300x10	35	300	10	5 x 9,0	20	65	65	65
AW-650 SP	35x350x10	35	350	10	5 x 9,0	20	80	75	75
AW-650 SP	38x75x10	38	75	10	2 x 7,0	15	45		
AW-650 SP	38x100x10	38	100	10	2 x 7,0	25	50		
AW-650 SP	38x125x10	38	125	10	2 x 7,0	25	75		
AW-650 SP	38x150x10	38	150	10	2 x 7,0	25	100		
AW-650 SP	48x75x10	48	75	10	2 x 7,0	15	45		
AW-650 SP	48x100x10	48	100	10	2 x 7,0	25	50		
AW-650 SP	48x125x10	48	125	10	2 x 7,0	25	75		
AW-650 SP	48x150x10	48	150	10	2 x 7,0	25	100		
AW-650 SP	50x100x10	50	100	10	2 x 9,0	20	60		
AW-650 SP	50x150x10	50	150	10	3 x 9,0	20	55	55	
AW-650 SP	50x200x10	50	200	10	4 x 9,0	20	55	50	55
AW-650 SP	50x250x10	50	250	10	4 x 9,0	20	70	70	70
AW-650 SP	50x300x10	50	300	10	5 x 9,0	20	65	65	65
AW-650 SP	50x400x10	50	400	10	5 x 9,0	20	90	90	90
AW-650 SP	75x150x10	75	150	10	4 x 9,0	20	110		
AW-650 SP	75x200x10	75	200	10	6 x 9,0	20	80	80	
AW-650 SP	75x250x10	75	250	10	6 x 9,0	20	105	105	
AW-650 SP	75x300x10	75	300	10	8 x 9,0	20	85	90	85
AW-650 SP	75x400x10	75	400	10	8 x 9,0	20	120	120	120
AW-650 SP	75x500x10	75	500	10	10 x 9,0	20	115	115	115

Bronze

Beispiel für Artikelbezeichnung: AW-650 SP 18x75  
 W x L  
 Anlaufscheibe  
 Gleitlagertyp